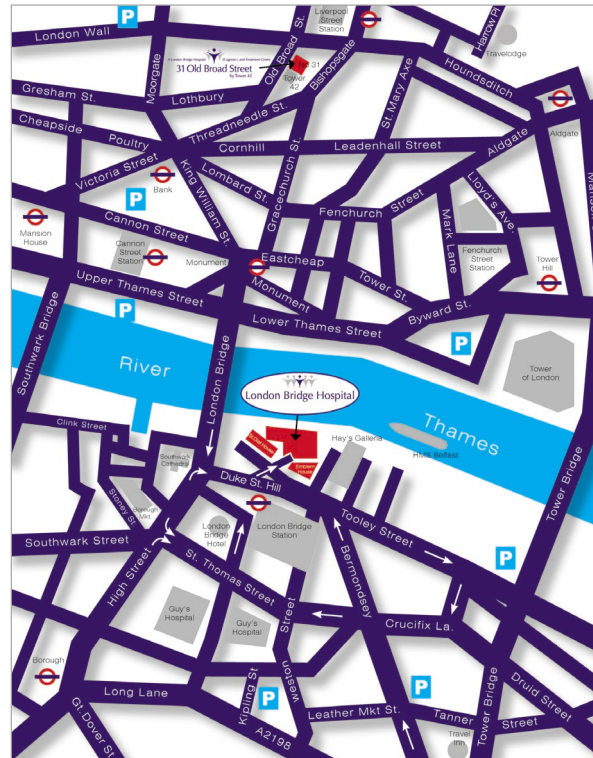




Mammogram of a breast

For bookings or further information please contact the X-Ray Department on 020 7234 2773.




London Bridge Hospital

BREAST SCREENING

How to find us:

London Bridge Hospital is situated on the South Bank of the Thames. We are next to London Bridge mainline and underground stations with easy access to the city. Please note: no right hand turn from Borough High Street into Duke Street Hill.

31 Old Broad Street is situated on Old Broad Street in the heart of the city and next to Tower 42 (formerly the Natwest Tower).

GP LIAISON

A service for GPs and patients who require assistance with referrals to consultants and Hospital services.

Opening hours: Monday-Friday 08.30-17.30hrs
Telephone: 020 7234 2009/2120/2094
Fax: 020 7234 2019

London Bridge Hospital

27-29 Tooley Street, London SE1 2PR
Telephone 020 7407 3100
Fax 020 7407 3162
E-mail info@lbh.hcahealthcare.co.uk
Website www.londonbridgehospital.com

SERVICES AVAILABLE

London Bridge Hospital now has 3 sites which offer mammography. Docklands at Canary Wharf, 31 Old Broad Street (OBS) in the City, and 29 Tooley Street at London Bridge Hospital (LBH).

Both OBS and LBH now have the newer digital technology as opposed to the analog film screen



Analyzing the Mammogram

combination. Instead of an image being processed onto film, digital mammography takes an electronic image and stores it onto a computer. This has several advantages. A digital image as opposed to a film image can be manipulated later on a screen to allow for optimum diagnosis, e.g filters and contrast can be applied on dense breasts to give the radiologist premium viewing.



Mammogram

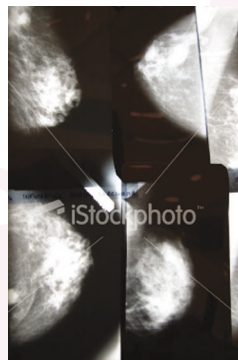
Digital images can also be easily archived and stored on a CD for future follow-ups. The digital mammography imaging screening trial also showed that (Pisano et al,2005) there is a reduced radiation dose with digital mammography and that it is significantly better than film mammography for screening woman.

- Under the age of 50
- With very dense breasts
- Pre or peri-menopausal woman of any age.

The mammography team is comprised of radiographers who hold the Postgraduate Certificate in Mammography Practice and Consultant Radiologists who are internationally renowned specialists in the breast field.

One Stop Breast clinics are also held at LBH and OBS, with the availability of triple assessment and results on the same evening. Please see our website for further details.

WHAT IS A MAMMOGRAM?



Assortment of Mammograms

It is an image of the breast tissue taken using low dose xrays.

Routinely, four images are taken (two of each side) by compressing the breast between two plates for several seconds. For some women this may cause

temporary discomfort but should not persist and does NOT cause any harm to the breast. The compression of the breast helps to give a clear image for the doctor making the report.

WHY A MAMMOGRAM?

A mammogram is used as the primary diagnostic imaging tool for women over the age of 35 if they are symptomatic, or over 40 as a screening test.



With early stage breast cancer, when there may be no lump, you can usually see patterns or calcium spots on the mammogram that suggest a breast cancer may be there. These structural pattern changes are very difficult to see in a young woman's breast which is why

an ultrasound is generally recommended.

BENEFITS OF SCREENING

One of the major benefits of regular breast screening (once every one or two years) is that cancers that are found are generally diagnosed at an earlier stage which means they need less treatment and are more likely to be curable.

According to the NHS Breast Screening Program about 7 cancers are found for every 1,000 women screened. A major study reviewing data on 1.1 million Swedish women showed that regular mammography screening between ages 40 to 69 was associated with a 17 to 37 per cent reduction in advanced tumours (Cancer Journal, June, 2007).