

Drs Guy Chung-Faye and Dr John O'Donohue are Consultant Gastroenterologists at the London Bridge Hospital with a particular interest in Bowel Cancer Screening and high-quality colonoscopy. Both are accredited to perform colonoscopies for the NHS Bowel Cancer Screening Programme.

Dr Guy Chung-Faye is Lead Colonoscopist and Dr O'Donohue is Clinical Director of the SE London Bowel Cancer Screening Centre. Dr O'Donohue is also Clinical Lead for London for the Bowel Cancer Screening Programme.

Dr Chung-Faye's and Dr John O'Donohue's private practice at London Bridge Hospital covers all aspects of Bowel Cancer Screening and any other gastro-intestinal problems.

For further information on the procedures and the services listed below please visit our website: [www.londonbridgehospital.com](http://www.londonbridgehospital.com)



London Bridge Hospital

## BOWEL CANCER SCREENING

### How to find us:

London Bridge Hospital is situated on the South Bank of the Thames. We are next to London Bridge mainline and underground stations with easy access to the city. Please note: no right hand turn from Borough High street into Duke Street Hill. 31 Old Broad Street is situated on Old Broad Street in the heart of the city and next to Tower 42 (formerly the Natwest Tower).

### DR GUY CHUNG-FAYE & DR JOHN O'DONOHUE

Consultant Gastroenterologists  
Bowel Cancer Screening

1st Floor, Medical Secretariat  
London Bridge Hospital  
27 Tooley Street  
London SE1 2PR

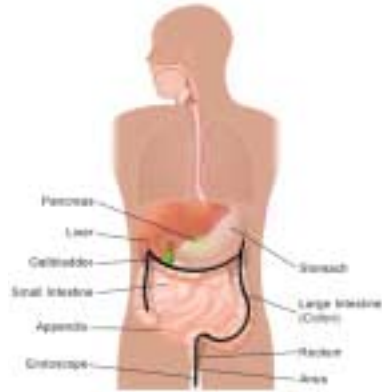
Secretaries: tel. 020 7234 2865 (Dr Chung-Faye)  
and Pam Bond, (Dr O'Donohue)  
tel: 020 83331777

### London Bridge Hospital

27-29 Tooley Street, London SE1 2PR  
Telephone 020 7407 3100  
Fax 020 7407 3162  
E-mail [info@lbh.hcahealthcare.co.uk](mailto:info@lbh.hcahealthcare.co.uk)  
Website [www.londonbridgehospital.com](http://www.londonbridgehospital.com)

## BOWEL CANCER SCREENING

Bowel Cancer is the second leading cause of Cancer deaths in the UK. Screening for Bowel Cancer reduces deaths from Bowel Cancer.



The NHS is implementing Bowel Cancer Screening for all 60-69 year old patients. You have to be registered with a GP to be eligible for screening. This screening test looks for the

presence of blood in the stool (faeces). If blood is detected in the stool, you will be invited for a Colonoscopy (flexible camera examination of the bowel) at your local Bowel Cancer Screening Centre. Patients are invited to give a stool sample every 2 years in their 60s.

### ADVANTAGES OF THE STOOL TEST

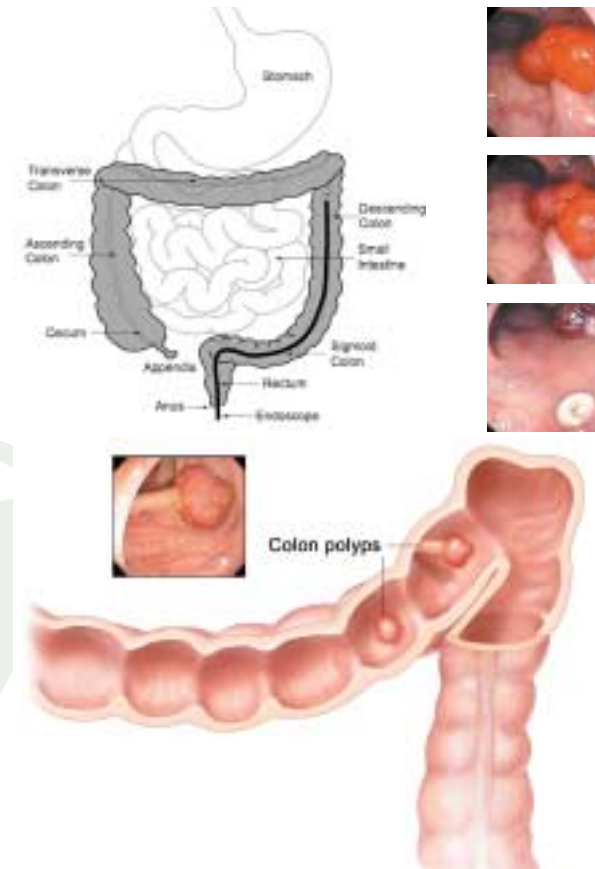
- The stool examination is easy, safe and inexpensive to perform.
- It will identify most large Cancers.
- It reduces deaths from Bowel Cancer.

### DISADVANTAGES OF THE STOOL TEST

- It may miss over half of all cancers, especially if they are not bleeding.
- It may not pick up Polyps (early abnormalities or growths).
- It may sometimes be positive, even if no Cancer is present.

Another form of Bowel Cancer Screening used in other Countries, including the USA, is to perform a Colonoscopy (flexible camera examination of the Bowel) in everyone, without the need for a stool test. This is much more accurate as it allows direct visualisation of the entire Bowel and the removal or sampling of any abnormalities found.

Most Polyps found during the Colonoscopy can be removed at the same time (see images), without the need for an operation and before they turn into Cancers.



## WHAT SHOULD I DO ?

Should you be in the age range due to be tested by the NHS by means of the stool test, you would be best advised to attend.

However, if you:

- Wish to undergo a Colonoscopy instead of the stool test.
- Are not eligible but you are worried about Bowel Cancer.
- Have a family history of Bowel Cancer.
- Are worried about any other Abdominal or Bowel problems.

Then please contact us for an appointment to discuss these issues or any related concerns.

You will be seen promptly by our Gastroenterologist to discuss the best treatment option for you.

## WHAT TO EXPECT ON ARRIVAL

On your initial visit to the hospital you will be asked questions about your bowels by our Consultant Gastroenterologist, this is to build a picture of your circumstances and in no way should be seen as embarrassing.